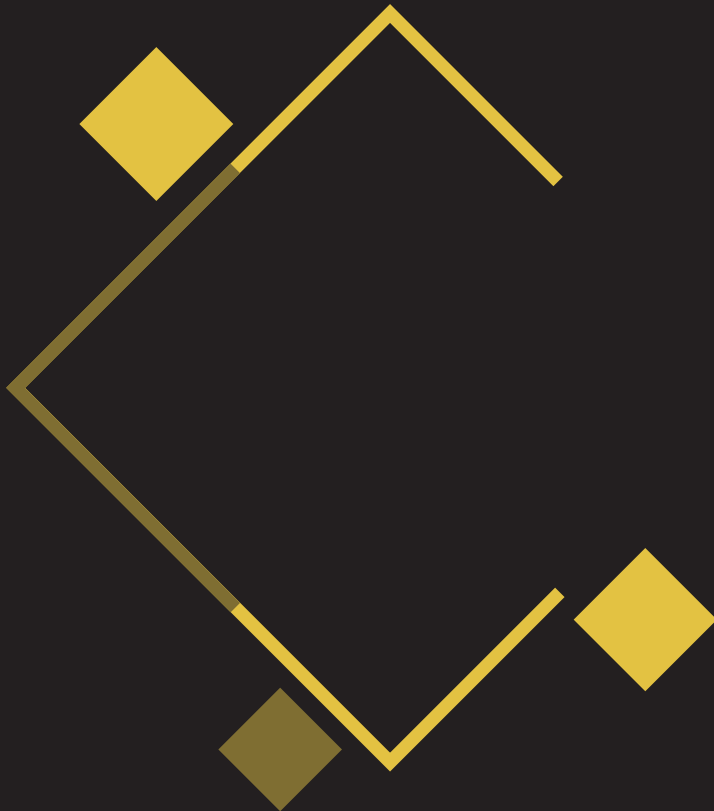




Capital Green Block & Farms

Gateway to the Life of Luxury



Marketed by:



Project by:




Capital Green Block & Farms

Presenting a truly elegant and luxurious lifestyle in a gated community where convenience, practicality, nature, aesthetics and modernism are all combined to develop a planned and modern community in the Capital of Pakistan. Capital Green Block & Farms presents three categories of living; Auroville, Queens Mead and The Orchards. With each having its own uniqueness and luxuries. Capital Green Block & Farms is planned according to engineering standards and latest international town planning.






Live in Islamabad the Beautiful



Islamabad the capital of Pakistan is one of the most beautiful capital of world. It is developed according to a carefully organized plan, divided into sectors along a grid of clean, tree-lined streets. The city is sheltered by the Margalla Hills, the foothills of the Himalayas.

The blend of nature and development gives a perfect-sightseeing of a naturalistic urban lifestyle where nature and urbanization complements each other.



Project Builders

PAK BUILDERS

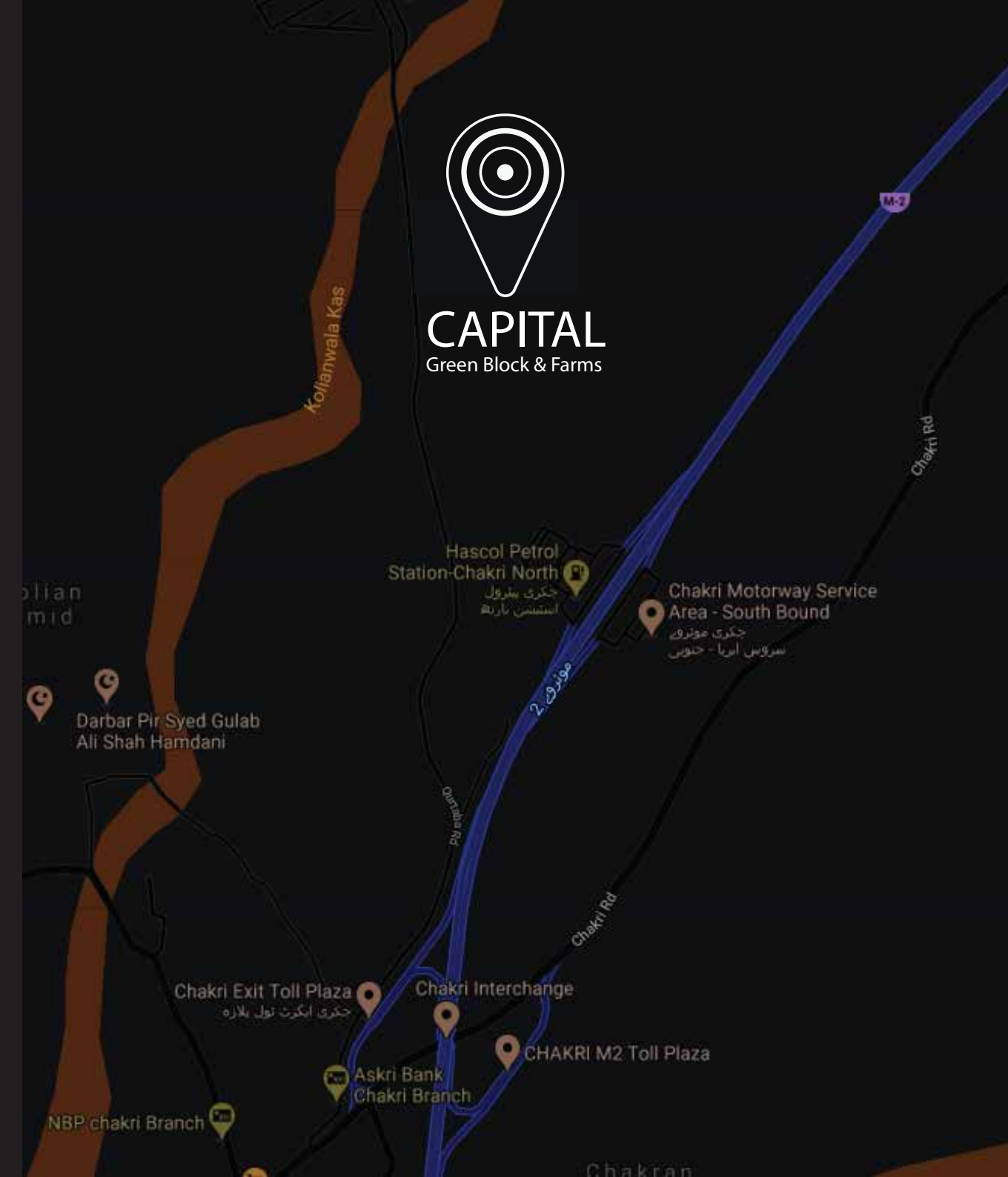
PAK BUILDERS Pvt. Ltd has been transforming the infrastructural identity of Pakistan since last decade. Sustainable infrastructure and industrial development, residential and commercial project development and management. Provision of benchmark engineering services are their core competencies. They are the pioneers of experimenting international practices in the country's construction engineering, which subsequently transformed the infrastructure development sector of Pakistan in major economic domain. Their vision and pragmatic contribution towards conceiving and implementing livable and smart future for Pakistan has been acknowledged at all levels.



Location

A landmark project in Islamabad. Pak Builders aspires to build a quality housing project on M-2 motorway Islamabad near new Islamabad International Airport falling on the eastern route of CPEC.

- 2 Minute from Chakri Interchange.
- 15 Minutes from new Islamabad International Airport.
- 25 Minutes from Zero Point.





Presenting a wide range of infrastructural development which includes; wide network of roads, underground electricity distribution network, underground drainage & sewerage network, sewerage treatment plants, underground water supply and network of tubewells along with water storage facilities, water filtration plant, underground telecommunication network, underground gas pipelines and solar roads.



Infrastructure

Features



24/7 Security



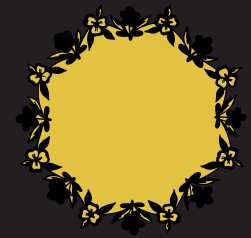
Mehal



Shuttle Service



Hexagonious Park



Gardens of Heaven



Hub of Art



Mosque



Health Care



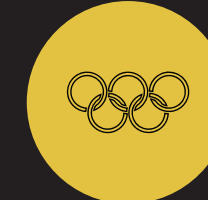
Film House



Business Square



Educational Institutions



Sports Complex



The Readers Home



C-Market

Features

24/7 Security

Security of the residents is the one of the top priorities. It has its own security team to keep an eye on each moment happening on the roads through surveillance cameras. To ensure security, security officers patrol the roads even at midnight.



Shuttle Service

Understanding the fact of travel issues and how the quality of travel contributes to the quality of performance after reaching the destination, is the spirit behind the "Capital Green Block & Farms Transport Service". With an imported Commuter fleet, Capital Green Block & Farms residents shall have quick and joyful access to all Main Zones of Capital Green Block & Farms.



Civic & Recreational Facilities

Hexagonious Park



Hive shaped amusement park and water park is designed to spend quality time with your friends and family where you can forget all your stress and find yourself in the world of fun and enjoyment. Hive shaped park with its six gates adjoins all the phases and sectors of town to make the park easily accessible.

Gardens of Heaven

To enjoy the nature, Capital Green Block & Farms has designed a garden based on the theme of Dubai miracle garden which would be fullest in its beauty nested with the colors of flowers.






Capital Mehal

To promote community building of residents, Capital Green Block & Farms offers a community center. Constructed in a shape of Noor Mehal, Bahawalpur. Capital Mehal revives the Royal heritage. It provides you with a place where the residents can frequently visit to enjoy with friends and family. With theme of Royal architecture, Capital Mehal also provides a royal ambiance to celebrate your memorable days and wedding ceremonies with excellent event management and catering service.

The Readers Home

“Seek Knowledge from Cradle to Grave” is a Hadith. Readers Home, a digital library is located near the main square, making easier for the citizens to avail the facility. Readers Home is an organized library containing books and Journals related to every field.





Hub of Art

A place where you can learn and present whatever art you like. Hub of Art provides you the opportunity to learn Music, Painting, Sculpturing and Martial arts. It also provides artists to exhibit their paintings in art gallery, every Sunday.



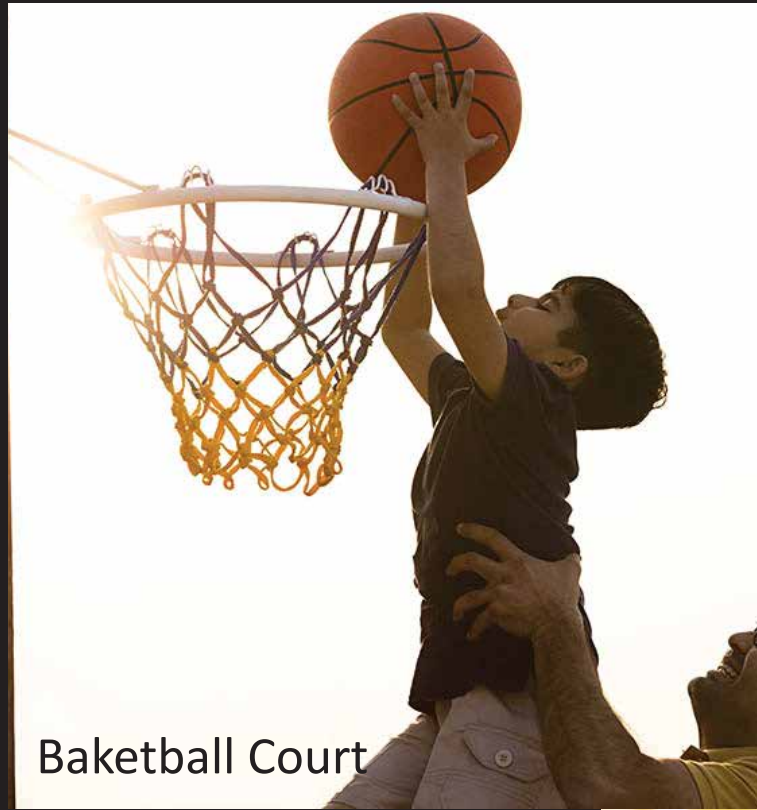
Abu Ali Sina Hospital

A well-equipped international standard hospital offering an emergency as well as medical facility round the clock. With expert medical staff, Abu Ali Sina Hospital provides you with a facility which ensures that in case of an emergency you don't need to go beyond the premises of the Town.



Capital Sports Complex

Capital Sport Complex is awaiting your arrival at Capital Green Block & Farms. There is a professional team to take care of everything of you. Capital Sports Complex is place which is designed to make you active and physically fit. It presents an array of physical activities which includes; Gymnasium, Yoga, Bowling, Football, Basketball, Table Tennis, Snooker, Tennis, Horse Riding, Camping Site, Swimming Pool and Golf course facility. Furthermore; there is also Capital Café where you can visit with your friends and family to treat your taste buds.



Basketball Court



Tennis Court



Football Ground



Golf Court



Cricket Ground

Capital Film House



Cinema

Giving preference to entertainment, there is a cinema for the residents of Capital Green Block & Farms, where you can take your family as well as non-residents to enjoy the latest released Pakistani and Hollywood movies.





Capital Mosque

Keeping in mind the historical religious events in sub-continent , a Grand Jamia mosque is designed in the centre of town. The mosque is designed in accordance with Muslim architecture of Great Babri Masjid. The mosque is equipped with two ablution areas, and 50 wheelchairs for the elderly. It can accommodate up to 1000 worshippers, with an inside capacity of over 500 people. The location of Mosque in the town is strategically decided in the main square to make it easily accessible for all the residents.



Educational Institutions

Capital Green Block & Farms is providing you a complete and quality lifestyle within the premises of the town. The Plan also includes a separate area for modern and well-equipped educational institutions from primary to high school.





Businesses

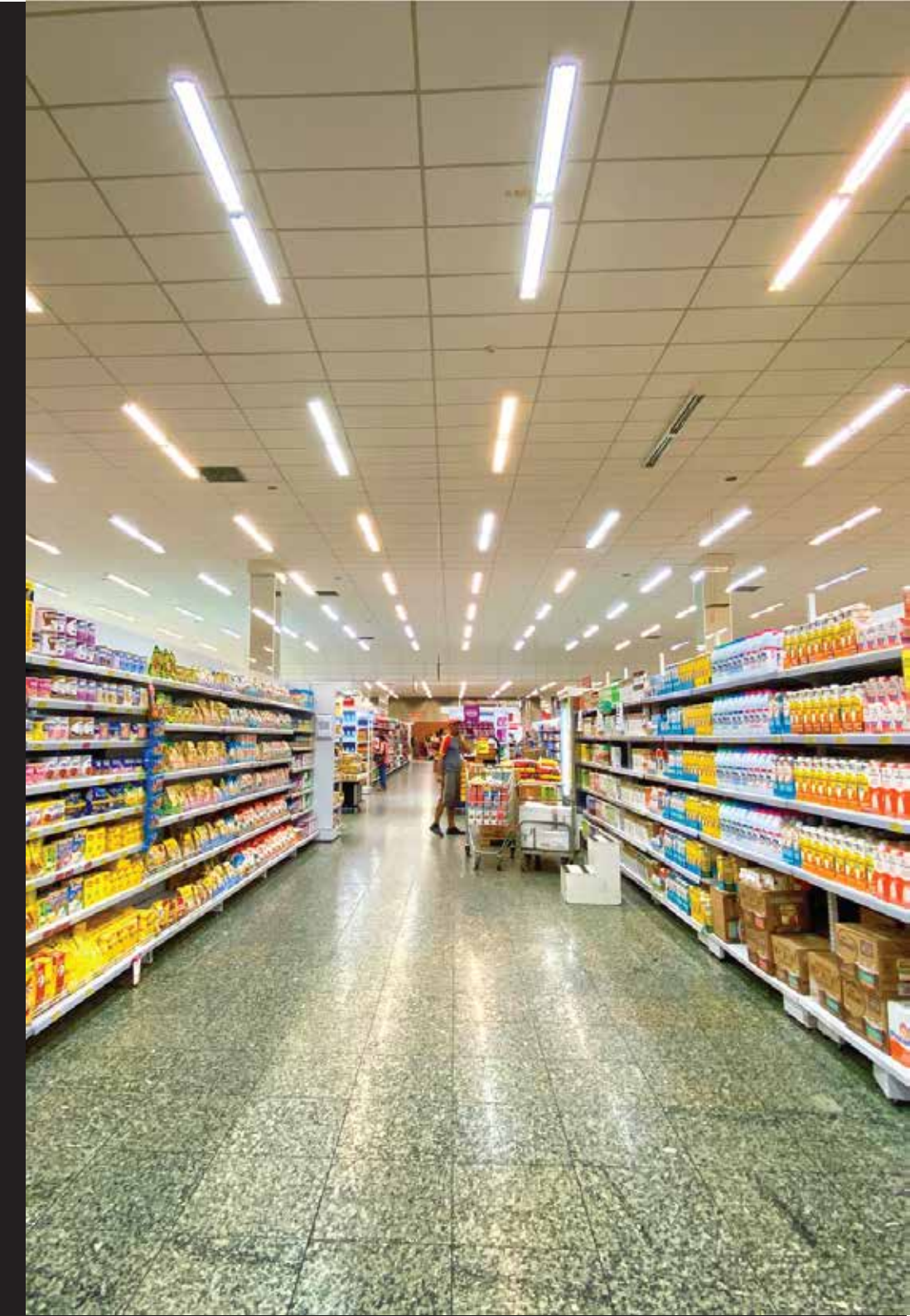
Business Square

Corporate Businesses and Mall
A modern designed commercial center is located at the main square. The commercial centre includes the offices of corporate business and a mall. A truly remarkable mall is the centerpiece of Capital Green Block & Farms, where there will be both national and international brands to satisfy your clothing and accessories desired.



C-Market

Street Market
Presenting its unique feature, C-Market is the street market where there are stalls of fruits, vegetables and accessories of daily use.



Capital Residencia

Auroville

Luxurious houses

Auroville, comprises of housing blocks that are designed in accordance with the current trends of modern architecture. With an eco-friendly environment auroville brings you closer to nature. With four-sided aluminum windows it gives the opportunity to enjoy the panoramic view of Queens Mead, Business Square, C-Market, The Orchards, Capital Sports Complex, Capital Mahal, Hexagonious Park, Mosque. Auroville houses also provides an in-house horizontal lawn. A mini commercial hub, street market, mosque and a dispensary are within the vicinity of auroville.



Queens Mead

Luxurious Villas

Queens Mead are Mediterranean styled villas which are located among meadows, lustrous water features and presents a peaceful green landscape. Ranging from 10 marla to 1 kanal, Queens Mead are the perfect blend of Mediterranean architecture and lavish lifestyle, placed at the heart of semi-urban Islamabad. For the convenience of residents a mosque, market and dispensary is planned near Queens Mead.



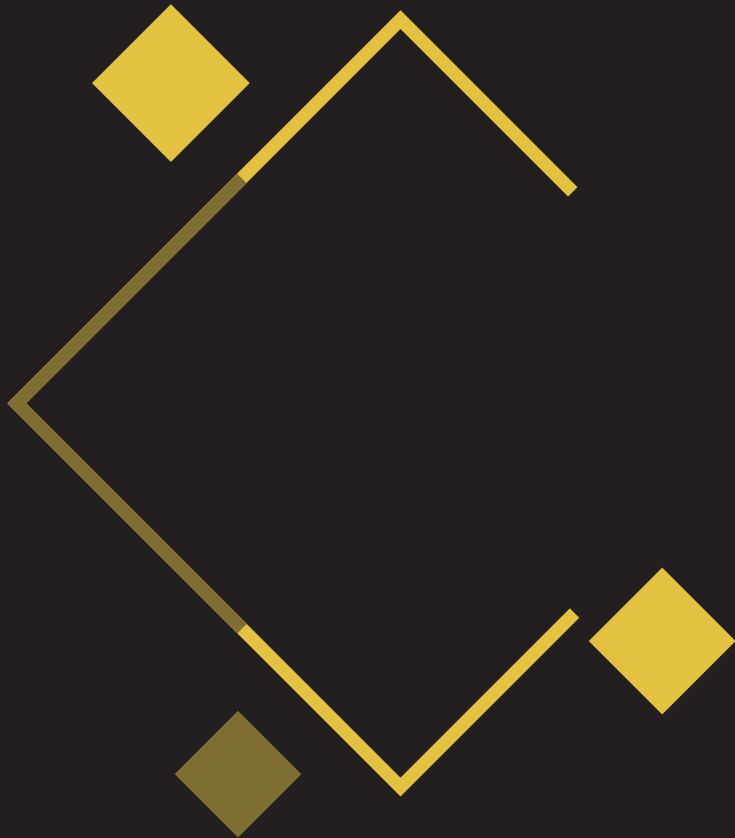


Capital Orchard



Sustainable environment and promotion of green Pakistan is one of the objectives of Capital Green Block & Farms. Now your dream of having a farmhouse is reality. Capital Green Block & Farms offers Capital Orchard ranging from 2 kanal to 6 kanal. The Orchards are equipped with underground electricity, sui gas, water supply, sewage & drainage system. Its beauty is enhanced through two rows of lush green cherry and pine trees and a water pond near the farms which further embellish the area. The Orchards is comprised of two sectors; Condo and Ranch, Condo is of 2 kanal whereas Ranch is of 4 kanal and 6 kanal. Mini Commercial Hubs, Walking parks and Mosques are designed to adjoin Condo and Ranch for the convenience of residents.





info@predams.com



+92-304-11 11 844



Office#4 Rehmat
Plaza,Blue Area
Islamabad,Pakistan

